

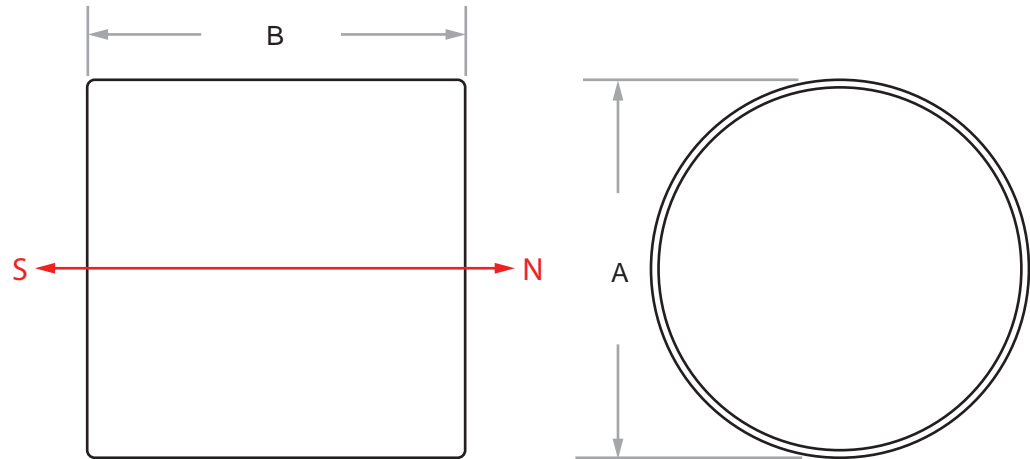
MECHANICAL SPECIFICATIONS:

A = 12.5mm

B = 12.5mm

MAGNETIC SPECIFICATIONS:


- 1) MAGNETISE THROUGH C
- 2) RED ARROW INDICATES POLES
- 3) Br = 1.32 T
- 4) Tw = 80°C MAX



12.5mm x 12.5mm

4:1

*Solidworks (DXF) or CAD/CAM drawings available on special request

Material: N42 Sintered Neodymium Magnet	<div> Indigo Instruments 169 Lexington Court, Unit I Waterloo, Ontario, Canada N2J 4R9 Tel: 1 (877) 746-4764 info@indigoinstruments.com www.indigoinstruments.com</div>			
Finish: Ni-Cu-Ni	Drawn: CM	Date: 2018/04/15	Title: Disc Magnet - 12.5mm x 12.5mm	
Unless otherwise specified, dimensions are in mm , except as noted. Tolerances are: Angles: +/- 0.5 degrees Dimensions: .X +/- 0.1	Checked: SL	Date: 2018/04/15	Revision:	Part No: 44204-12.5
	Approved: SL	Date: 2018/04/15	Scale: 4:1	Sheet: 1 of 1